



G110 modular LED grow light

A patent-pending compact LED artificial luminaire designed for emitting an electromagnetic spectrum similar to sunray in stimulating the plant growth. It is featuring with full spectrum that could be promoting photosynthesis for plants throughout the vegetative and reproductive growth stages.



General Characteristic

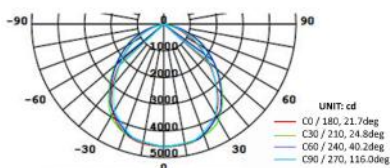
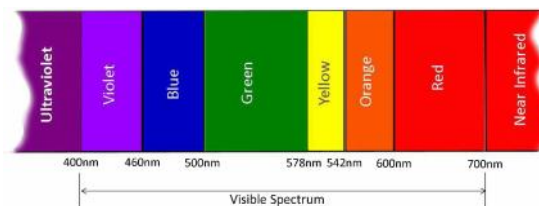
| | |
|---------------------------|--|
| Body structure | Aluminium alloy profile fitted with proprietary PMMA multiple-lens water resistance diffuser |
| Thermal management | Integrated with housing |
| Cable gland type | Stainless steel |
| Rated life span | ≥50000 hours (accumulative) |
| Ingress protection | IP65 |
| Industrial standard | EMC Directive 2004/108/EC |
| Operation temperature | -40°C ~ +60°C |
| Certification | CE, FCC, RoHS |
| Net weight | 4.06 kg |
| Relative moisture | 10% ~ 90% |
| Total harmonic distortion | <15% |

Light Characteristic

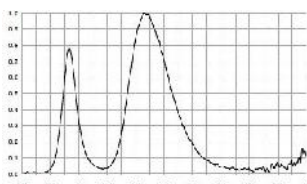
| | |
|---------------------------|---|
| Light source | 2835 LED chips coupled with multiple secondary lens insulated cover |
| Color temperature (white) | 6000~6500K |
| Full spectrum (400~800nm) | See wavelength curve below |
| Color rendering index | Ra >75 |
| Luminous efficacy (white) | 120 lumen per watt |
| Peak intensity | 45000cd |
| Luminous efficiency | ≥95% |
| Ultra violet ray | Free |
| Beam angle (optional) | 15°/25°/45°/60°/90°/70°*140° |

Electrical Characteristic

| | |
|------------------|-------------------------|
| Input voltage | 90~265VAC, 47~63Hz |
| Output voltage | 35Vdc |
| Rated power | 120.0W |
| System power | 126.3W |
| Power factor | PF ≥0.95 |
| Power efficiency | >95% |
| Certification | CE, TUV, RoHS compliant |



Typical broad beam photometric



Full spectrum wavelength curve



Mounting bracket

Packing information

| Model # | Power Rating | | Lumen (White) | Module | Overall Size (mm) | | | Weight | | Packing Information | |
|-----------------|--------------|--------|---------------|---------|-------------------|-----|----|--------|------|---------------------|----------|
| | Rated | System | | | L | W | H | kg | lbs | Box Size (mm) | G/Weight |
| G115030-084W040 | 40.0W | 42.1W | 4800 | 1 unit | 300 | 130 | 50 | 1.5 | 3.3 | 300 x 140 x 100 | 1.9 kg |
| G115060-112W060 | 60.0W | 63.2W | 7200 | 2 units | 600 | 130 | 50 | 2.2 | 4.8 | 610 x 140 x 100 | 2.7 kg |
| G115060-168W080 | 80.0W | 84.2W | 9800 | 2 units | 600 | 130 | 50 | 2.2 | 4.8 | 610 x 140 x 100 | 2.7 kg |
| G115090-224W100 | 100.0W | 105.2W | 12000 | 3 units | 900 | 130 | 50 | 3.5 | 7.7 | 910 x 140 x 100 | 4.1 kg |
| G115090-252W120 | 120.0W | 126.3W | 14400 | 3 units | 900 | 130 | 50 | 3.5 | 7.7 | 910 x 140 x 100 | 4.1 kg |
| G115120-336W150 | 150.0W | 157.9W | 18000 | 4 units | 1200 | 130 | 50 | 4.3 | 9.5 | 1210 x 140 x 100 | 5.0 kg |
| G115120-336W180 | 180.0W | 189.5W | 21600 | 4 units | 1200 | 130 | 50 | 4.3 | 9.5 | 1210 x 140 x 100 | 5.0 kg |
| G115150-448W200 | 200.0W | 210.5W | 24000 | 5 units | 1500 | 130 | 50 | 7.4 | 16.3 | 1510 x 140 x 100 | 8.3 kg |
| G115150-448W250 | 250.0W | 263.2W | 27500 | 5 units | 1500 | 130 | 50 | 7.4 | 16.3 | 1510 x 140 x 100 | 8.3 kg |

